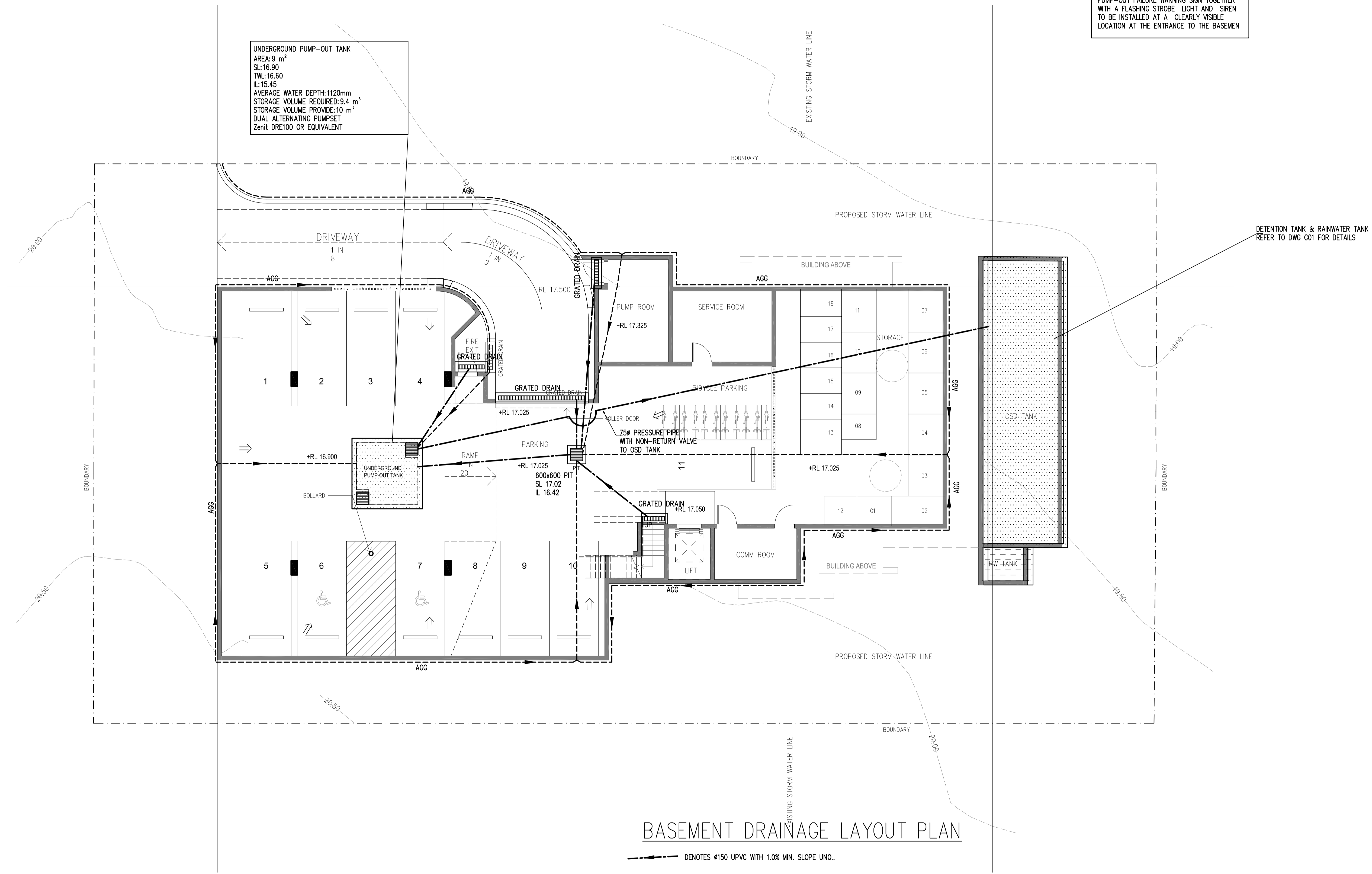


AN ALARM SYSTEM COMPRISING OF BASEMENT PUMP-OUT FAILURE WARNING SIGN TOGETHER WITH A FLASHING STROBE LIGHT AND SIREN TO BE INSTALLED AT A CLEARLY VISIBLE LOCATION AT THE ENTRANCE TO THE BASEMENT

UNDERGROUND PUMP-OUT TANK
 AREA: 9 m²
 SL: 16.90
 TWL: 16.60
 IL: 15.45
 AVERAGE WATER DEPTH: 1120mm
 STORAGE VOLUME REQUIRED: 9.4 m³
 STORAGE VOLUME PROVIDED: 10 m³
 DUAL ALTERNATING PUMPSET
 Zenit DRE100 OR EQUIVALENT



BASEMENT DRAINAGE LAYOUT PLAN

--- DENOTES Ø150 UPVC WITH 1.0% MIN. SLOPE UNO.

© COPYRIGHT Michael ELL Consulting Engineers Pty. Ltd.
 The copyright of this drawing remains the property of Michael ELL Consulting Engineers Pty. Ltd. and must not be reproduced in whole or in part without written permission. Do not scale off this drawing. Use figured dimensions. Verify all dimensions on site.

NSW GOVERNMENT
Family & Community Services
 Land & Housing Corporation
 www.facs.nsw.gov.au

GROUP GSA
 PTY LTD architects

ARCHITECT: **GROUP GSA PTY LTD**
 PH (02) 9261 4144 FAX (02) 9332 3458
 PROJECT MANAGER: **LAND & HOUSING CORPORATION**
 PH (02) 8753 8100 FAX (02) 8753 8011
 ELECTRICAL CONSULTANT: **MICHAEL ELL CONSULTING ENGINEERS PTY LTD**
 PH (02) 9807 5355 FAX (02) 9807 5366
 HYDRAULIC CONSULTANT: **MICHAEL ELL CONSULTING ENGINEERS PTY LTD**
 PH (02) 9807 5355 FAX (02) 9807 5366
 LANDSCAPE CONSULTANT: **MICHAEL ELL CONSULTING ENGINEERS PTY LTD**
 PH (02) 9807 5355 FAX (02) 9807 5366

BUSINESS PARTNER:
69-79 PEGLAR AVE
SOUTH GRANVILLE

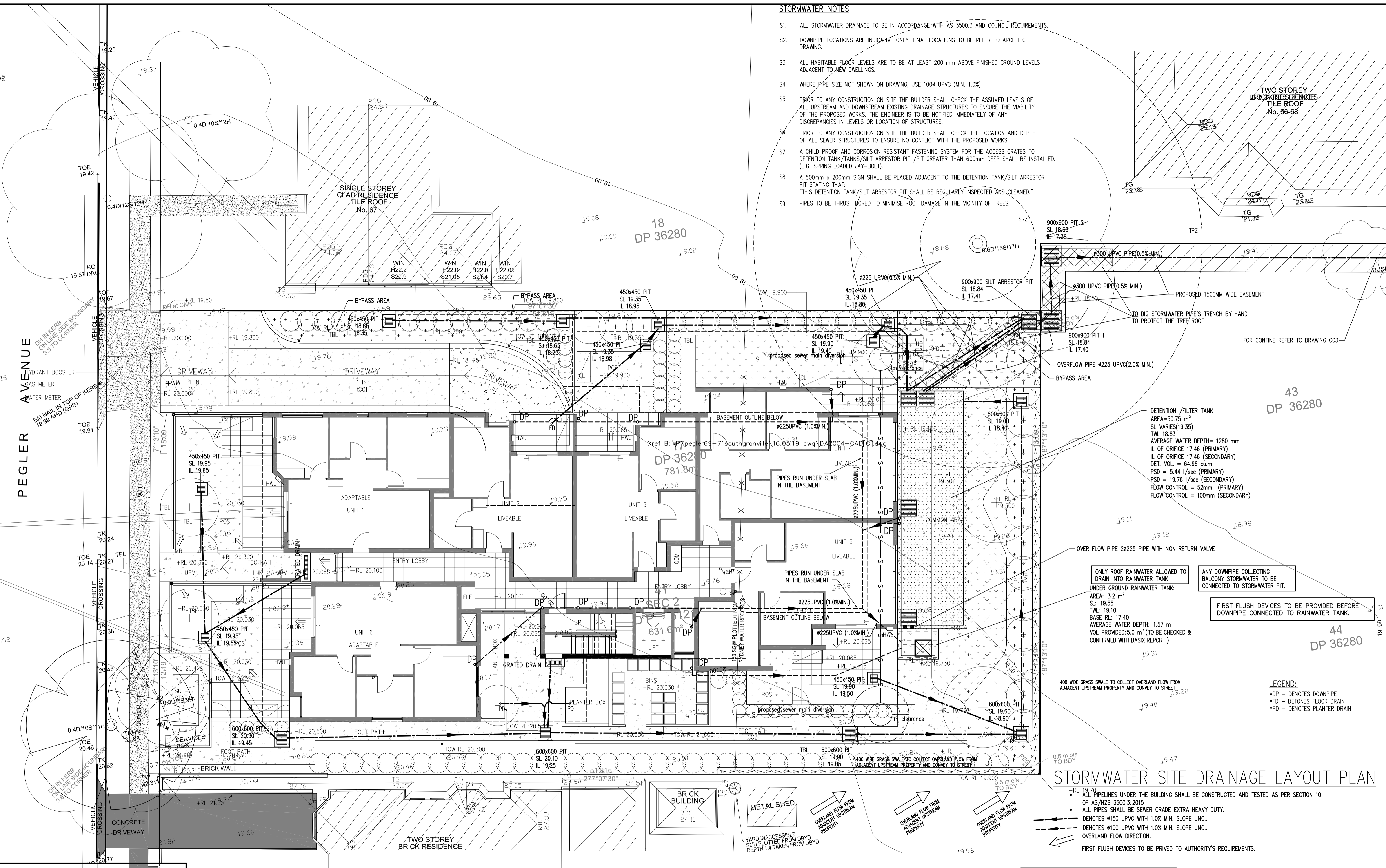
PROJECT:
69-79 PEGLAR AVE
SOUTH GRANVILLE

TITLE:
BASEMENT DRAINAGE LAYOUT PLAN

DATE:	22.01.19	SCALE:	1:100	CONTRACT JOB NO:	18088	PROJECT NO:	BGMZ
STAGE:	DA	DRAWN:	DC	CHECKED:	ME	APPROVED:	ME
FILE:	18088-C01b	PLOTTED:		TYPE:	C	SHEET:	C01
						REV:	B

STORMWATER NOTES

- S1. ALL STORMWATER DRAINAGE TO BE IN ACCORDANCE WITH AS 3500.3 AND COUNCIL REQUIREMENTS.
- S2. DOWNPIPE LOCATIONS ARE INDICATIVE ONLY. FINAL LOCATIONS TO BE REFER TO ARCHITECT DRAWING.
- S3. ALL HABITABLE FLOOR LEVELS ARE TO BE AT LEAST 200 mm ABOVE FINISHED GROUND LEVELS ADJACENT TO NEW DWELLINGS.
- S4. WHERE PIPE SIZE NOT SHOWN ON DRAWING, USE 100# UPVC (MIN. 1.0%)
- S5. PRIOR TO ANY CONSTRUCTION ON SITE THE BUILDER SHALL CHECK THE ASSUMED LEVELS OF ALL UPSTREAM AND DOWNSTREAM EXISTING DRAINAGE STRUCTURES TO ENSURE THE VIABILITY OF THE PROPOSED WORKS. THE ENGINEER IS TO BE NOTIFIED IMMEDIATELY OF ANY DISCREPANCIES IN LEVELS OR LOCATION OF STRUCTURES.
- S6. PRIOR TO ANY CONSTRUCTION ON SITE THE BUILDER SHALL CHECK THE LOCATION AND DEPTH OF ALL SEWER STRUCTURES TO ENSURE NO CONFLICT WITH THE PROPOSED WORKS.
- S7. A CHILD PROOF AND CORROSION RESISTANT FASTENING SYSTEM FOR THE ACCESS GRATES TO DETENTION TANK/TANKS/SILT ARRESTOR PIT /PIT GREATER THAN 600mm DEEP SHALL BE INSTALLED. (E.G. SPRING LOADED JAY-BOLT).
- S8. A 500mm x 200mm SIGN SHALL BE PLACED ADJACENT TO THE DETENTION TANK/SILT ARRESTOR PIT STATING THAT: "THIS DETENTION TANK/SILT ARRESTOR PIT SHALL BE REGULARLY INSPECTED AND CLEANED."
- S9. PIPES TO BE THRUST BORED TO MINIMISE ROOT DAMAGE IN THE VICINITY OF TREES.



STORMWATER SITE DRAINAGE LAYOUT PLAN

- 1. ALL PIPELINES UNDER THE BUILDING SHALL BE CONSTRUCTED AND TESTED AS PER SECTION 10 OF AS/NZS 3500.3:2015
- 2. ALL PIPES SHALL BE SEWER GRADE EXTRA HEAVY DUTY.
- DENOTES #150 UPVC WITH 1.0% MIN. SLOPE UNO.
- - - DENOTES #100 UPVC WITH 1.0% MIN. SLOPE UNO.
- ← OVERLAND FLOW DIRECTION.
- FIRST FLUSH DEVICES TO BE PRIVED TO AUTHORITY'S REQUIREMENTS.

1. ALL STORMWATER PITS IN LANDSCAPE OR TURFED AREAS TO HAVE PERFORATED GALV. MESH BELOW GRATE
2. ALL PITS/GRATE DRAIN IN TRAFFICABLE AREAS TO HAVE A GALVANISED HINGED BOLT DOWN AND HEELGUARD GRATES

© COPYRIGHT Michael ELL Consulting Engineers Pty. Ltd. The copyright of this drawing remains the property of Michael ELL Consulting Engineers Pty. Ltd. and must not be reproduced in whole or in part without written permission. Do not scale off this drawing. Use figured dimensions. Verify all dimensions on site.

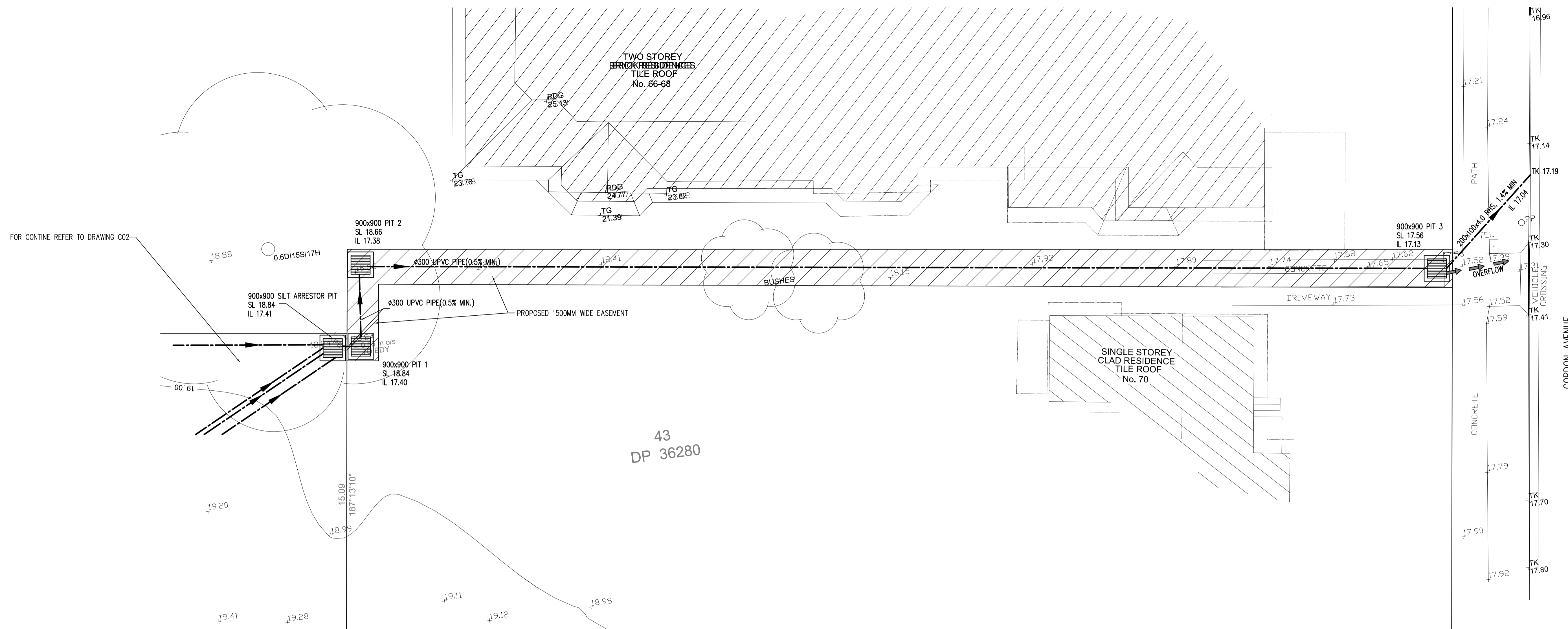
Family & Community Services
Land & Housing Corporation
 Locked Bag 4009
 Ashfield NSW BC1800
 PHONE NO (02) 8753 9000
 www.facs.nsw.gov.au

REV	DATE	NOTATION/AMENDMENT
D	16.09.19	AMENDED TO COUNCIL'S COMMENTS
C	17.05.19	UPDATED TO ARCH'S AMENDED SITE PLAN
B	11.03.19	UPDATED TO ARCH'S AMENDED SITE PLAN
A	31.01.19	UPDATED TO ARCH'S AMENDED SITE PLAN

ARCHITECT GROUP GSA PTY LTD PH (02) 9061 4144 FAX (02) 9332 3458	CIVIL CONSULTANT MICHAEL ELL CONSULTING ENGINEERS PTY LTD PH (02) 9807 5355 FAX (02) 9807 5356
PROJECT MANAGER LAND & HOUSING CORPORATION PH (02) 8753 8100 FAX (02) 8753 8011	HYDRAULIC CONSULTANT
ELECTRICAL CONSULTANT	LANDSCAPE CONSULTANT

BUSINESS PARTNER:	PROJECT:
	69-79 PEGLER AVE SOUTH GRANVILLE

TITLE	DA
SITE STORMWATER DRAINAGE LAYOUT PLAN	
FILE	PROJECT NO.
18088-C02d	BGMZ
DATE	SCALE
22.01.19	1:100
STATUS	CONTRACT NO.
C	18088
DA	DC
ME	ME
TYPE	SHEET
C	C02
FILE	REV.
	D



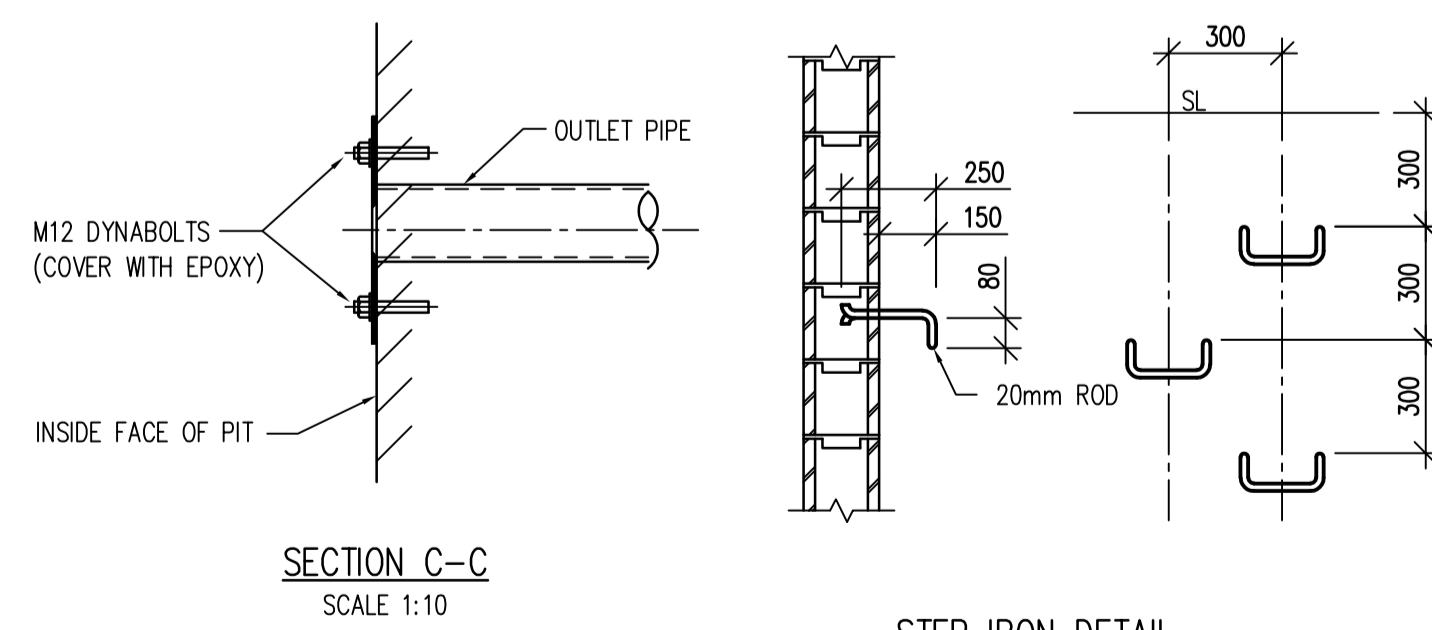
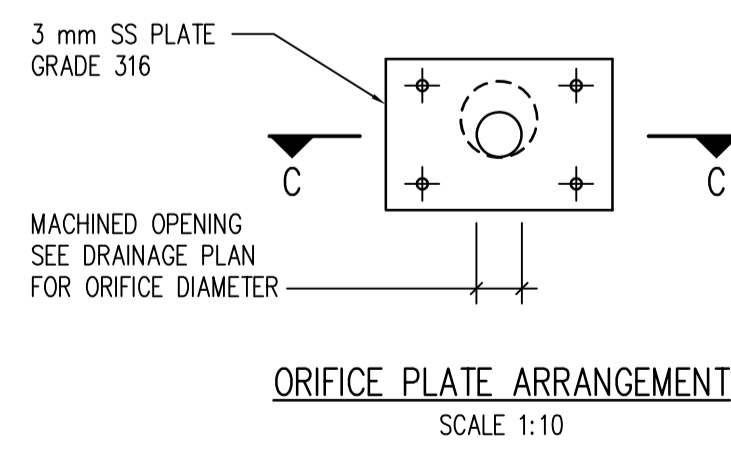
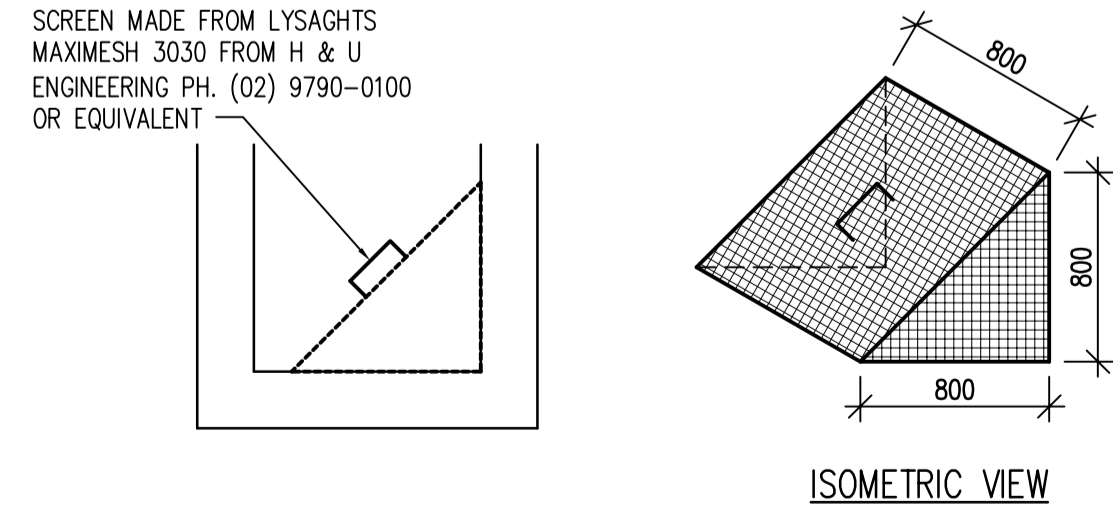
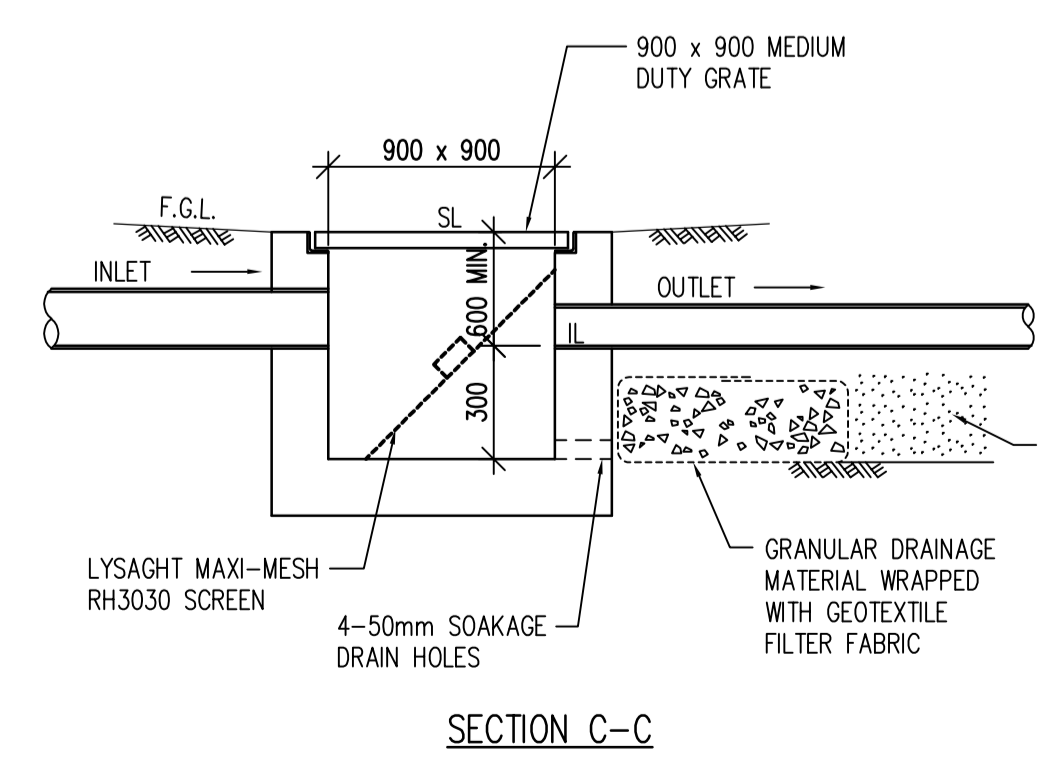
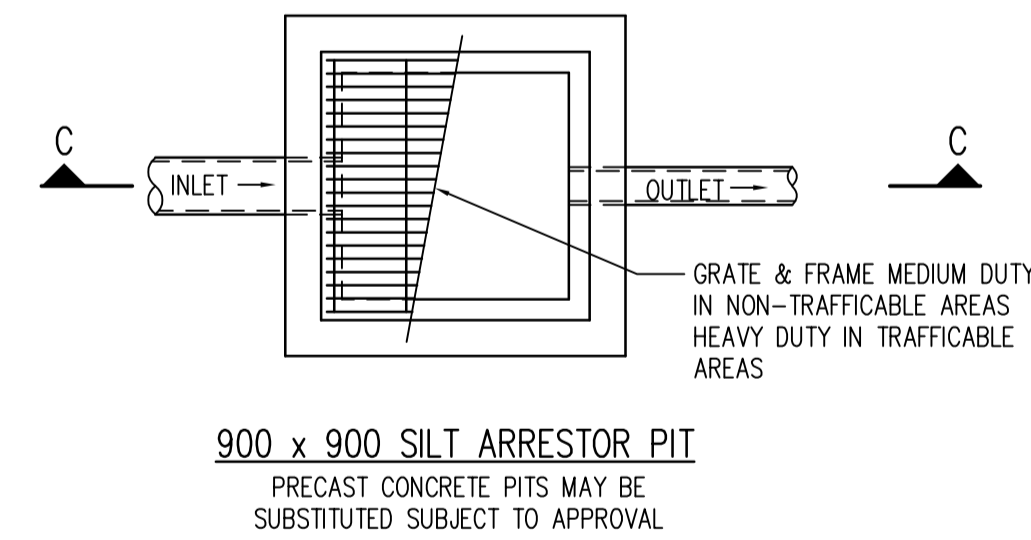
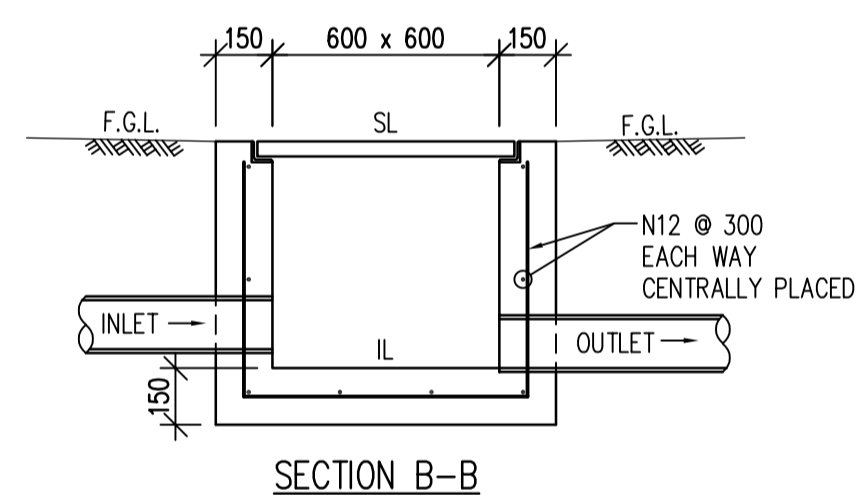
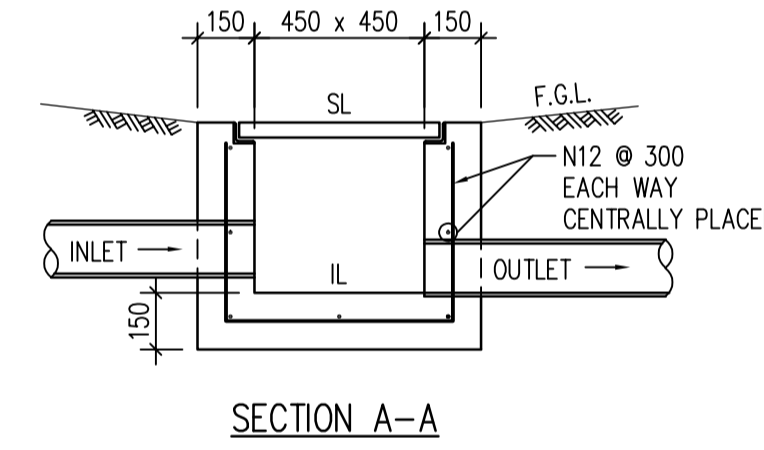
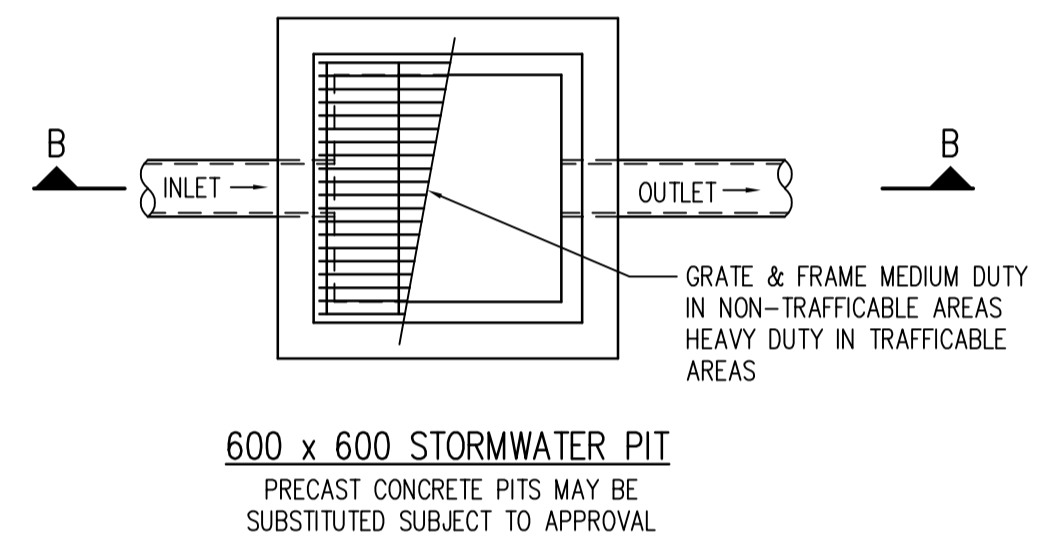
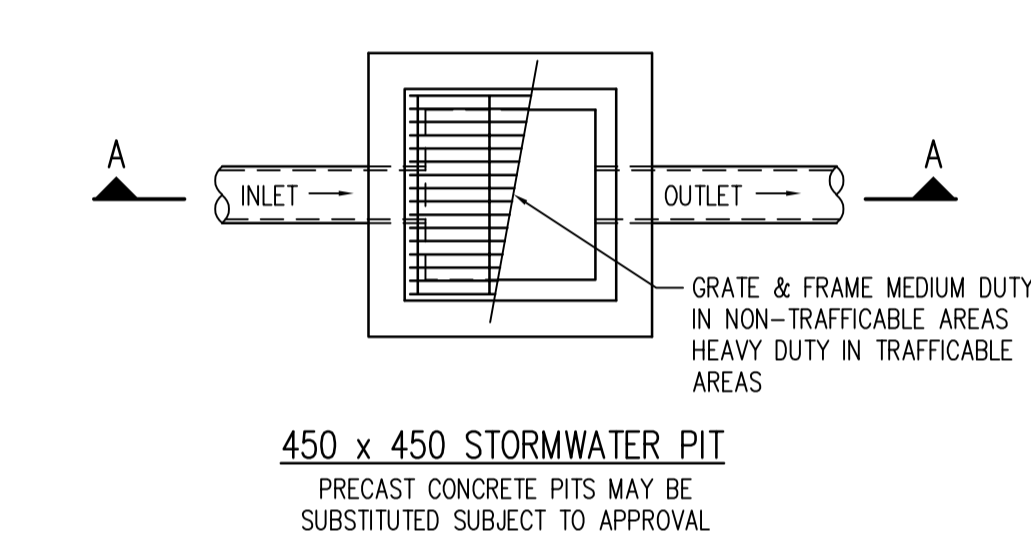
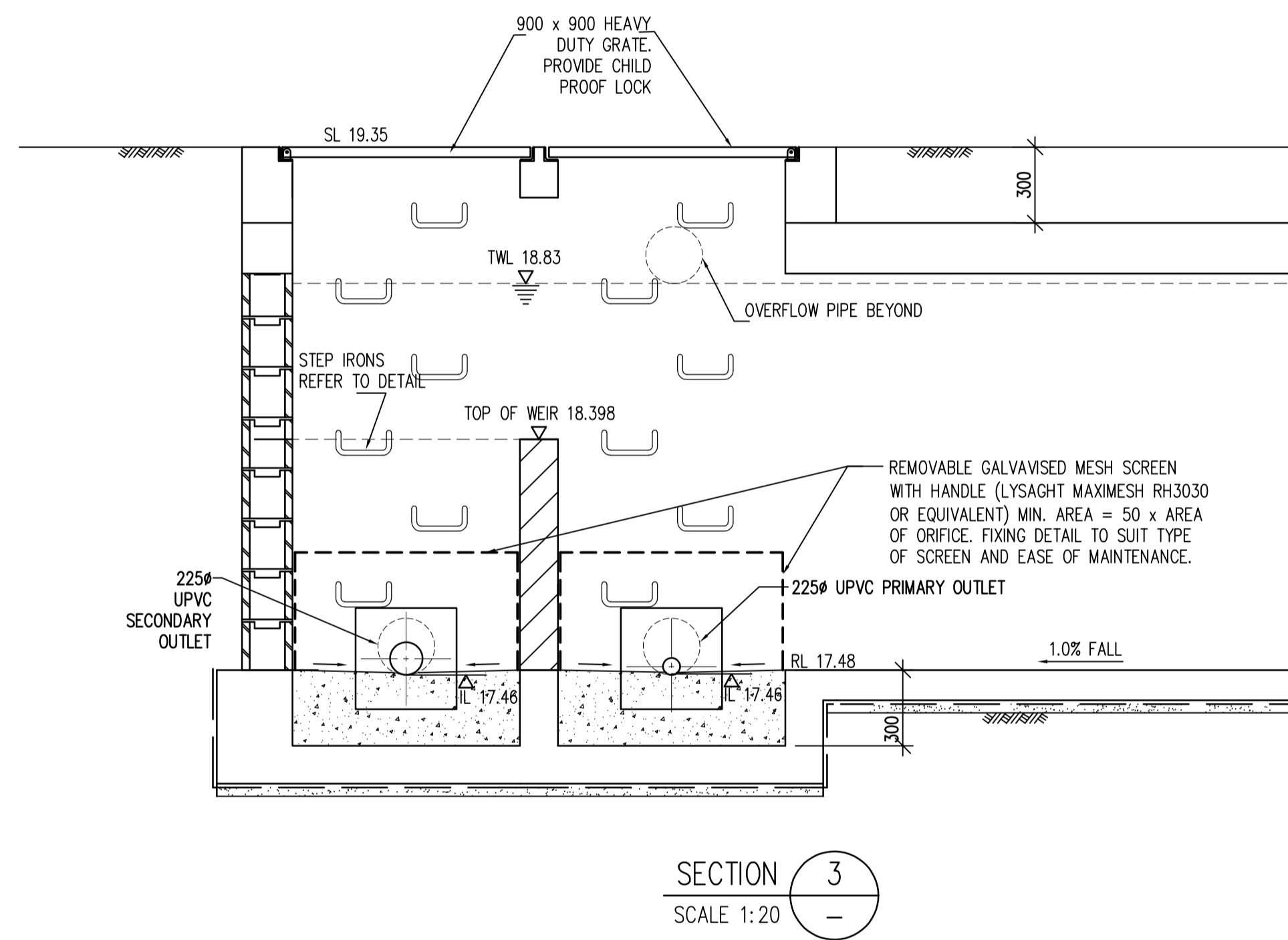
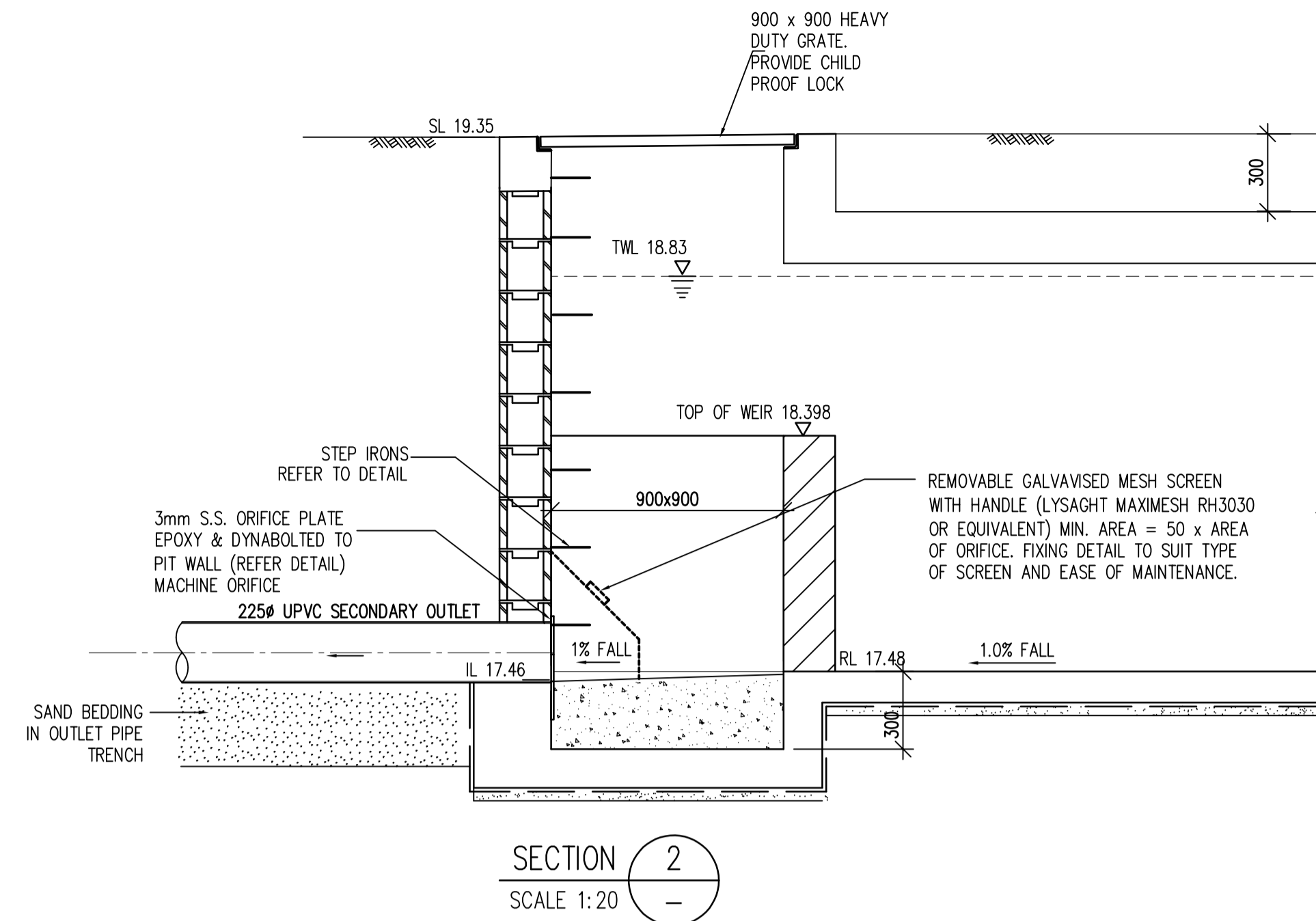
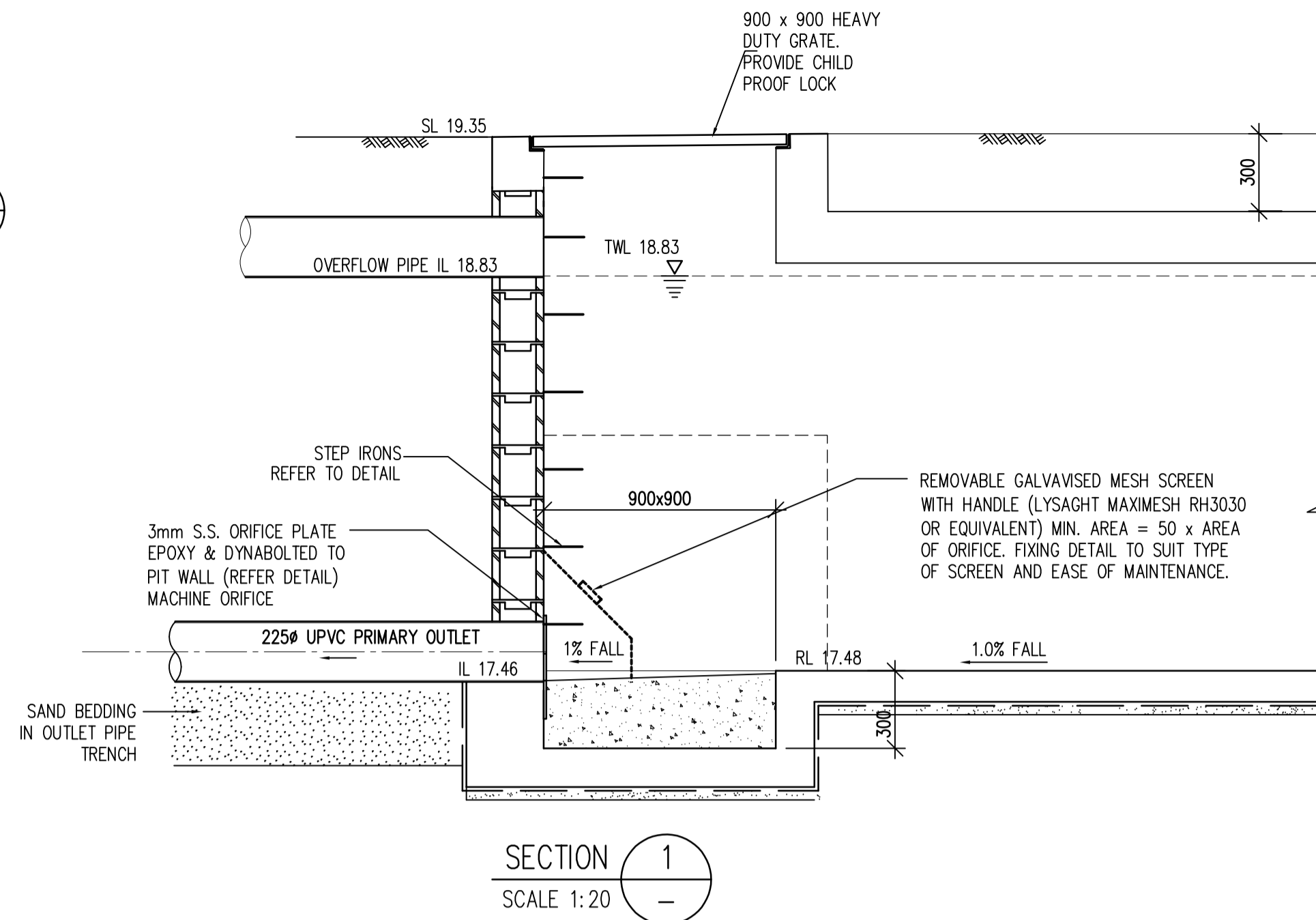
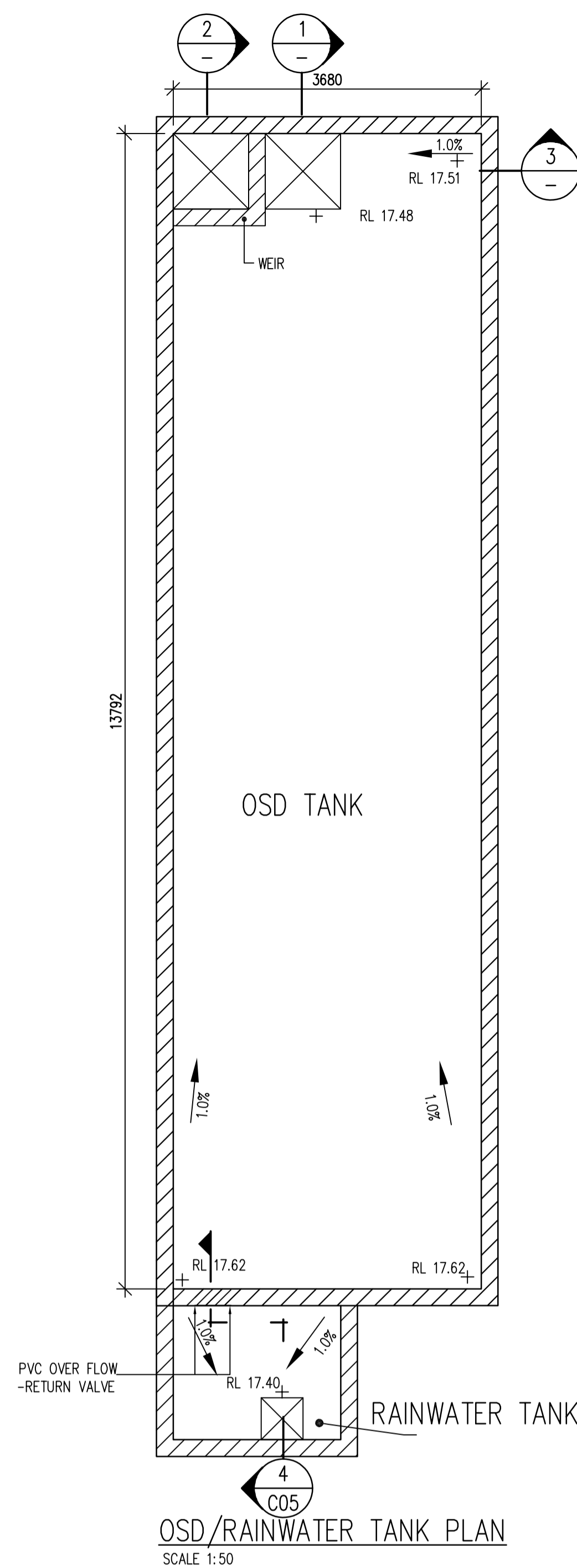
STORMWATER DRAINAGE LAYOUT PLAN

THE CONTRACTOR SHALL ARRANGE AND PAY ALL FEES TO CONNECT TO COUNCIL'S STORMWATER SYSTEM, IN COMPLIANCE WITH COUNCIL REQUIREMENTS.

PRIOR TO ANY CONSTRUCTION ON SITE THE BUILDER SHALL CHECK THE LOCATION AND DEPTH OF ALL UNDERGROUND SERVICES TO ENSURE NO CONFLICT WITH THE PROPOSED WORKS.

© COPYRIGHT Michael Eil Consulting Engineers Pty. Ltd. The copyright of this drawing remains the property of Michael Eil Consulting Engineers Pty. Ltd. and must not be reproduced in whole or in part without written permission. Do not scale off this drawing. Use figured dimensions. Verify all dimensions on site.

	Family & Community Services Land & Housing Corporation www.facs.nsw.gov.au	LOCKED BAG 4009 ASHFIELD NSW BC1800 PHONE No (02) 8753 9000	GROUP GSA PTY LTD architects	ARCHITECT GROUP GSA PTY LTD PH (02) 9261 4144 FAX (02) 9332 3458	CIVIL CONSULTANT MICHAEL EIL CONSULTING ENGINEERS PTY LTD PH (02) 9807 5355 FAX (02) 9807 5366	BUSINESS PARTNER:	PROJECT: 69-79 PEGLAR AVE SOUTH GRANVILLE	TITLE: STORMWATER DRAINAGE LAYOUT PLAN	STATUS: DA			
				PROJECT MANAGER LAND & HOUSING CORPORATION PH (02) 8753 8100 FAX (02) 8753 8011	HYDRAULIC CONSULTANT				DATE: 22.01.19 SCALE: 1:100 CONSULTANT JOB NO: 18088 PROJECT NO: BGMZ			
REV: A DATE: 18.09.19 AMENDED TO COUNCIL'S COMMENTS				NOTATION/AMENDMENT		CHECKED: ME APPROVED: ME			FILE: 18088-C03a	PLOTTED:	TYPE: C SHEET: C03	REV: A



STEP IRON DETAIL
PROVIDE STEP IRONS WHEN PITS/TANKS ARE GREATER THAN 1000 DEEP

© COPYRIGHT Michael Eil Consulting Engineers Pty. Ltd. The copyright of this drawing remains the property of Michael Eil Consulting Engineers Pty. Ltd. and must not be reproduced in whole or in part without written permission. Do not scale off this drawing. Use figured dimensions. Verify all dimensions on site.

NSW GOVERNMENT
Family & Community Services
 Land & Housing Corporation www.facs.nsw.gov.au

LOCKED BAG 4009
 ASHFIELD NSW BC1800
 PHONE No (02) 8753 9000

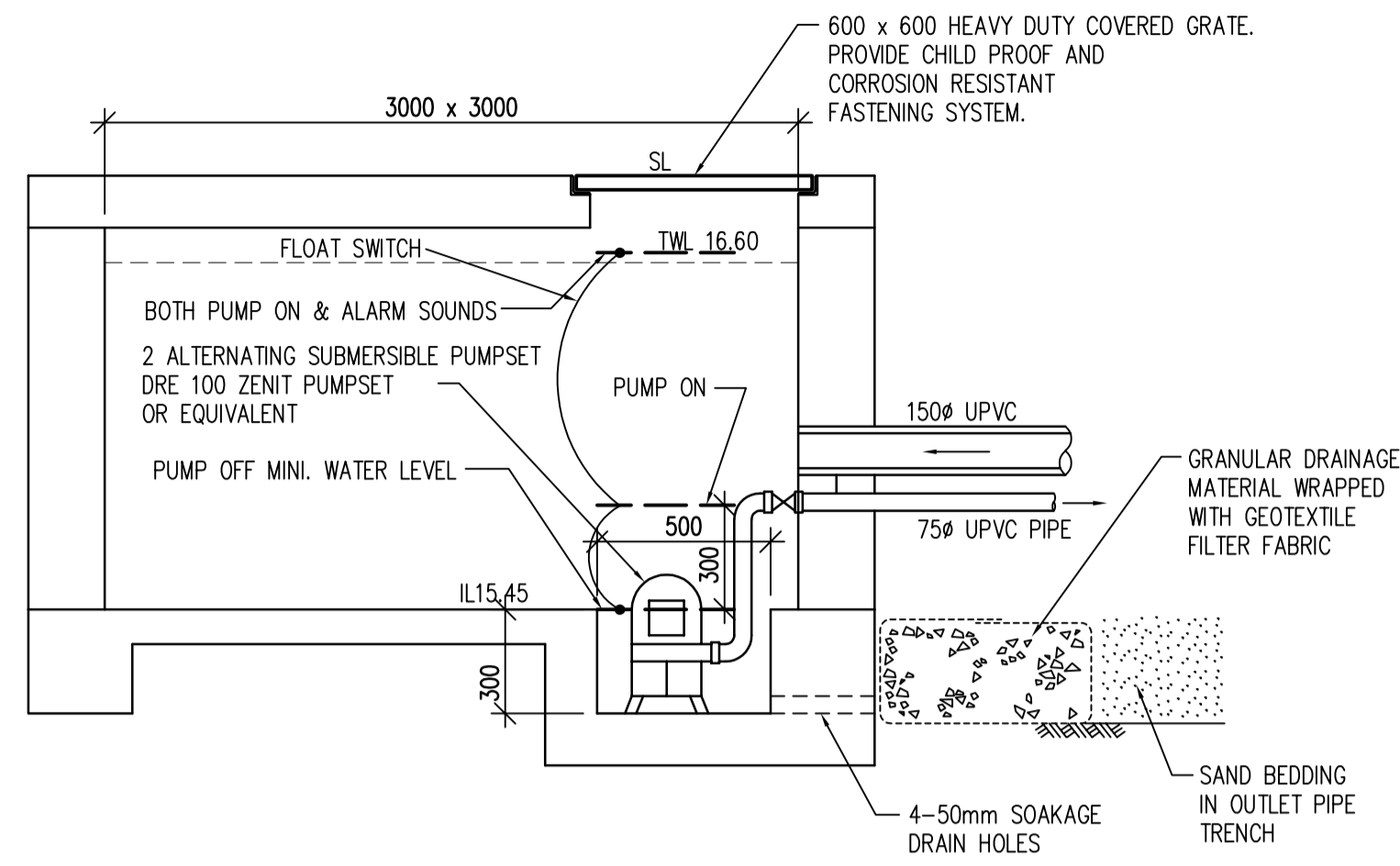
GROUP GSA
 PTY LTD architects

REV	DATE	NOTATION/AMENDMENT
C	16.09.19	AMENDED TO COUNCIL'S COMMENTS
B	11.03.19	UPDATED TO ARCH'S AMENDED SITE PLAN
A	31.01.19	UPDATED TO ARCH'S AMENDED SITE PLAN
DATE	NOTATION/AMENDMENT	
DO NOT SCALE DRAWINGS. CHECK ALL DIMENSIONS ON SITE. FIGURED DIMENSIONS TAKE PRECEDENCE.		

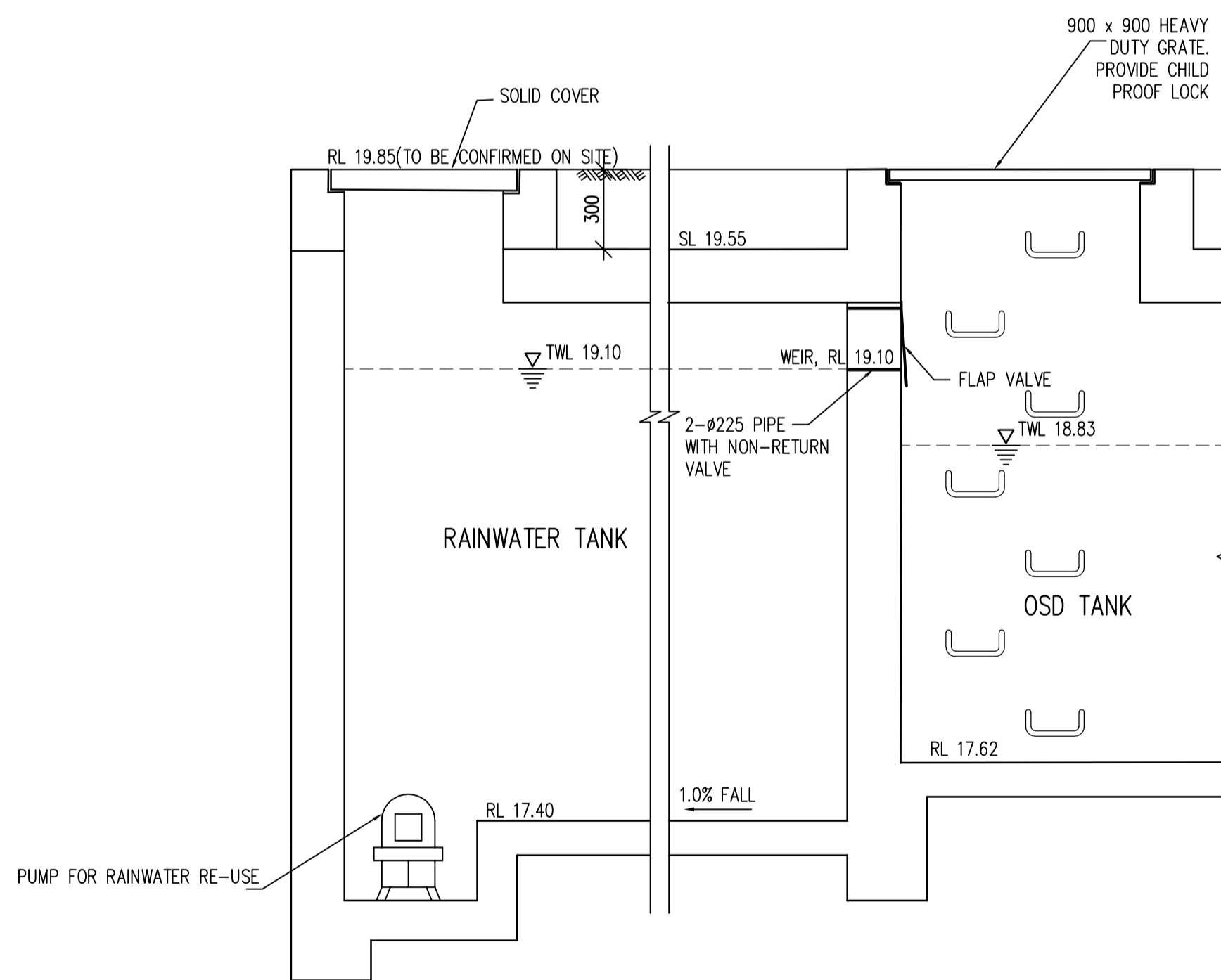
ARCHITECT GROUP GSA PTY LTD PH (02) 9261 4144 FAX (02) 9332 3458	CIVIL CONSULTANT MICHAEL EIL CONSULTING ENGINEERS PTY LTD PH (02) 9807 5355 FAX (02) 9807 5366
PROJECT MANAGER LAND & HOUSING CORPORATION PH (02) 8753 8100 FAX (02) 8753 8011	HYDRAULIC CONSULTANT
ELECTRICAL CONSULTANT	LANDSCAPE CONSULTANT

BUSINESS PARTNER:	PROJECT:
	69-79 PEGLAR AVE SOUTH GRANVILLE

TITLE:	STATUS:
STORMWATER DETAILS	DA
DATE: 22.01.19	SCALE: 1:20
CONTRACT JOB NO: 18088	PROJECT NO: BGMMZ
STAGE: DA	USARW: DC
CHECKED: ME	APPROVED: ME
FILE: 18088-C04c	PLOTTED:
TYPE: C	SHEET: C04
REV: C	



SECTION THROUGH PUMP OUT PIT
SCALE NTS



SECTION 4
SCALE 1:20
C04

© COPYRIGHT Michael ELL Consulting Engineers Pty. Ltd.
The copyright of this drawing remains the property of Michael ELL Consulting Engineers Pty. Ltd. and must not be reproduced in whole or in part without written permission. Do not scale off this drawing. Use figured dimensions. Verify all dimensions on site.

ARCHITECT	GROUP GSA PTY LTD PH (02) 9261 4144 FAX (02) 9332 3458	
PROJECT MANAGER	LAND & HOUSING CORPORATION PH (02) 8753 8100 FAX (02) 8753 8011	
REV	DATE	NOTATION/AMENDMENT
A	18.09.19	AMENDED TO COUNCIL'S COMMENTS
DO NOT SCALE DRAWINGS. CHECK ALL DIMENSIONS ON SITE. FIGURED DIMENSIONS TAKE PRECEDENCE.		

CIVIL CONSULTANT	MICHAEL ELL CONSULTING ENGINEERS PTY LTD PH (02) 9807 5355 FAX (02) 9807 5366
HYDRAULIC CONSULTANT	
LANDSCAPE CONSULTANT	

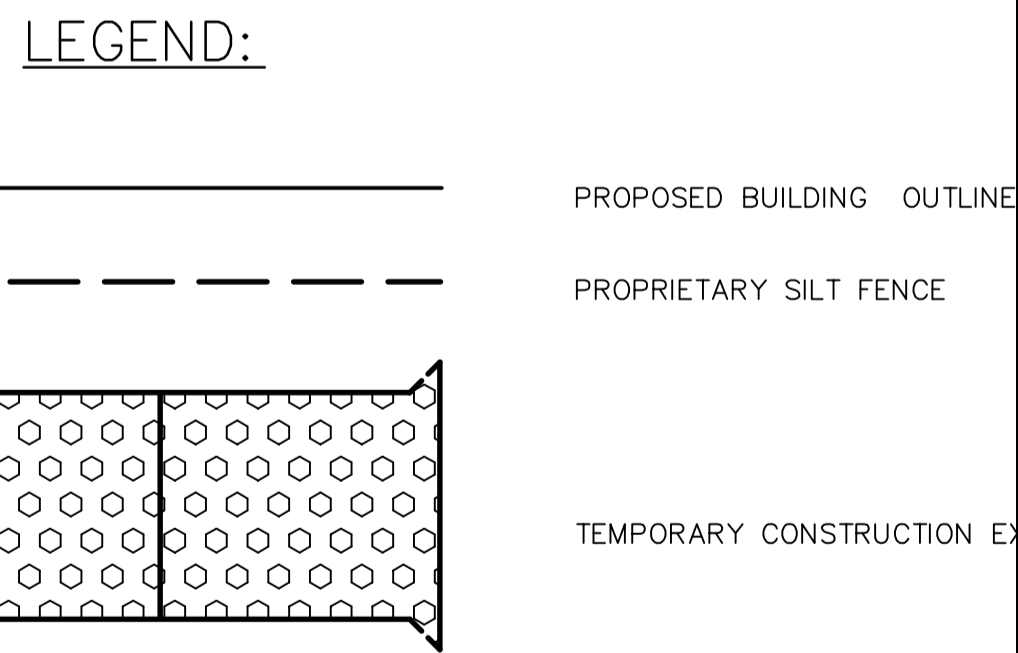
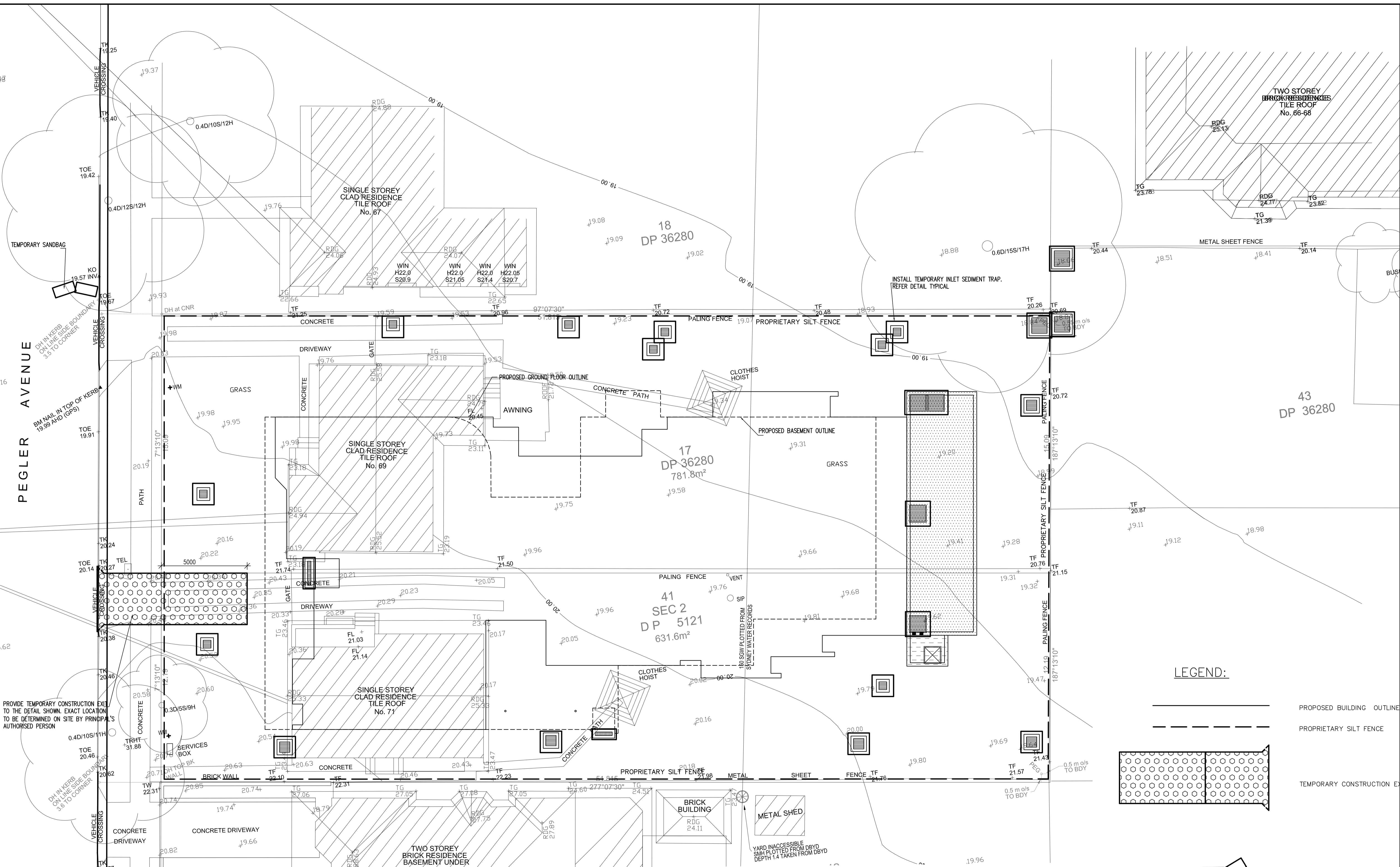
BUSINESS PARTNER:	
-------------------	--

PROJECT:	69-79 PEGLAR AVE SOUTH GRANVILLE
----------	-------------------------------------

TITLE:	STORMWATER DETAILS (2)
FILE:	18088-C05a

STATUS:	DA
DATE:	12.03.19
SCALE:	1:20
CONTRACT JOB NO:	18088
PROJECT NO:	BGMZ
STAGE:	DA
DESIGNER:	DC
CHECKED:	ME
APPROVED:	ME
TYPE:	C
SHEET:	C05
REV:	A

FILE:	18088-C05a
PLOTTED:	



EROSION AND SEDIMENT CONTROL PLAN

© COPYRIGHT Michael ELL Consulting Engineers Pty. Ltd. The copyright of this drawing remains the property of Michael ELL Consulting Engineers Pty. Ltd. and must not be reproduced in whole or in part without written permission. Do not scale off this drawing. Use figured dimensions. Verify all dimensions on site.

NSW GOVERNMENT
Family & Community Services
 Land & Housing Corporation www.facs.nsw.gov.au

LOCKED BAG 4009
 ASHFIELD NSW BC1800
 PHONE No (02) 8753 9000

GROUP GSA
 PTY LTD architects

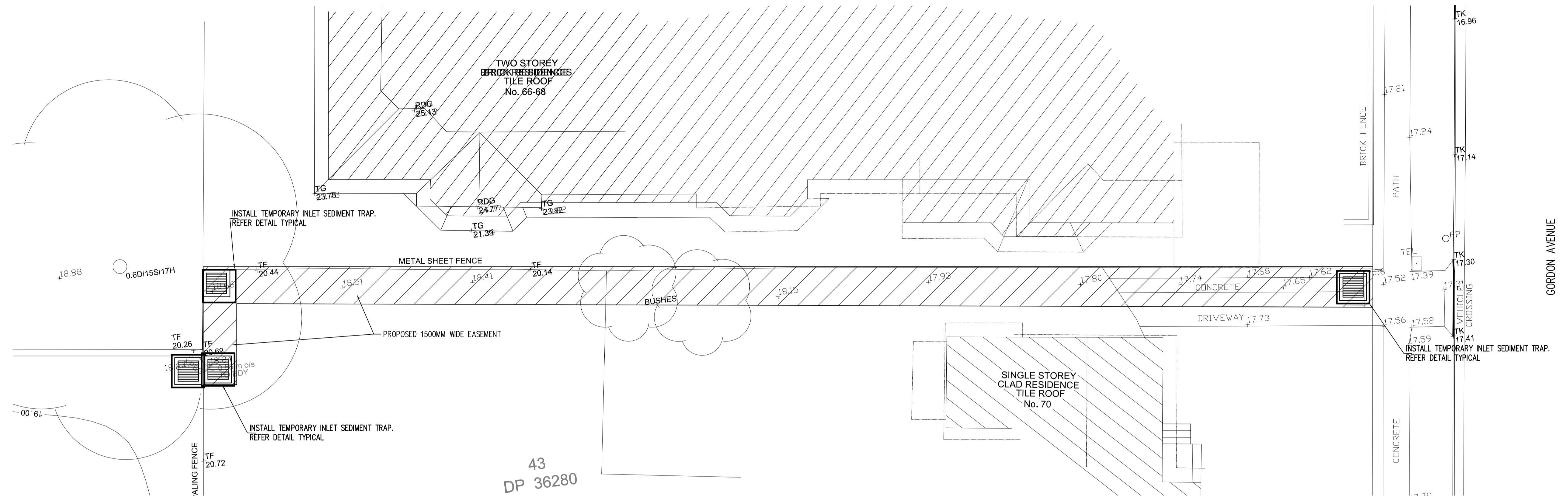
REV	DATE	NOTATION/AMENDMENT
B	16.09.19	AMENDED TO COUNCIL'S COMMENTS
A	17.05.19	UPDATED TO ARCH'S AMENDED SITE PLAN
		DO NOT SCALE DRAWINGS. CHECK ALL DIMENSIONS ON SITE. FIGURED DIMENSIONS TAKE PRECEDENCE.

ARCHITECT GROUP GSA PTY LTD PH (02) 9061 4144 FAX (02) 9332 3458	CIVIL CONSULTANT MICHAEL ELL CONSULTING ENGINEERS PTY LTD PH (02) 9807 5355 FAX (02) 9807 5366
PROJECT MANAGER LAND & HOUSING CORPORATION PH (02) 8753 8100 FAX (02) 8753 8011	HYDRAULIC CONSULTANT
ELECTRICAL CONSULTANT	LANDSCAPE CONSULTANT

BUSINESS PARTNER:	PROJECT:
	69-79 PEGLAR AVE SOUTH GRANVILLE

TITLE:	EROSION AND SEDIMENT CONTROL PLAN
FILE:	18088-C06b

STATUS:	DA
DATE:	11.03.19
SCALE:	1:100
DRAWN:	18088
CHECKED:	BGMZ
APPROVED:	ME
FILE:	18088-C06b
PLOTTED:	
TYPE:	C
SHEET:	C06
REV:	B



EROSION AND SEDIMENT CONTROL PLAN

© COPYRIGHT Michael ELL Consulting Engineers Pty. Ltd.
 The copyright of this drawing remains the property
 of Michael ELL Consulting Engineers Pty. Ltd. and
 must not be reproduced in whole or in part without
 written permission. Do not scale off this drawing.
 Use figured dimensions. Verify all dimensions on site.

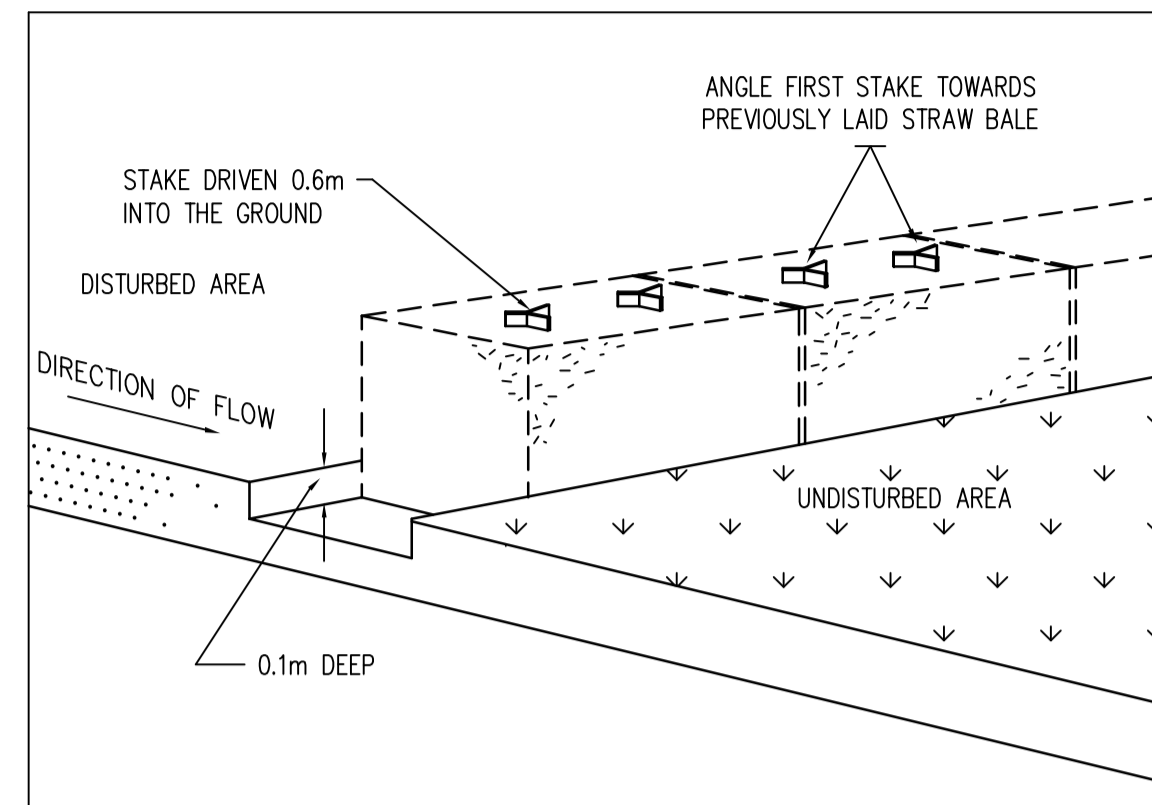
ARCHITECT	GROUP GSA PTY LTD PH (02) 9261 4144 FAX (02) 9332 3458	
PROJECT MANAGER	LAND & HOUSING CORPORATION PH (02) 8753 8100 FAX (02) 8753 8011	
ARCHITECT	MICHAEL ELL CONSULTING ENGINEERS PTY LTD PH (02) 9807 5355 FAX (02) 9807 5366	
HYDRAULIC CONSULTANT		
ELECTRICAL CONSULTANT		
LANDSCAPE CONSULTANT		
REV	DATE	AMENDMENT
A	18.09.19	AMENDED TO COUNCIL'S COMMENTS
		NOTATION/AMENDMENT
DO NOT SCALE DRAWINGS. CHECK ALL DIMENSIONS ON SITE. FIGURED DIMENSIONS TAKE PRECEDENCE.		

ARCHITECT	GROUP GSA PTY LTD PH (02) 9261 4144 FAX (02) 9332 3458
PROJECT MANAGER	LAND & HOUSING CORPORATION PH (02) 8753 8100 FAX (02) 8753 8011
ARCHITECT	MICHAEL ELL CONSULTING ENGINEERS PTY LTD PH (02) 9807 5355 FAX (02) 9807 5366
HYDRAULIC CONSULTANT	
ELECTRICAL CONSULTANT	
LANDSCAPE CONSULTANT	

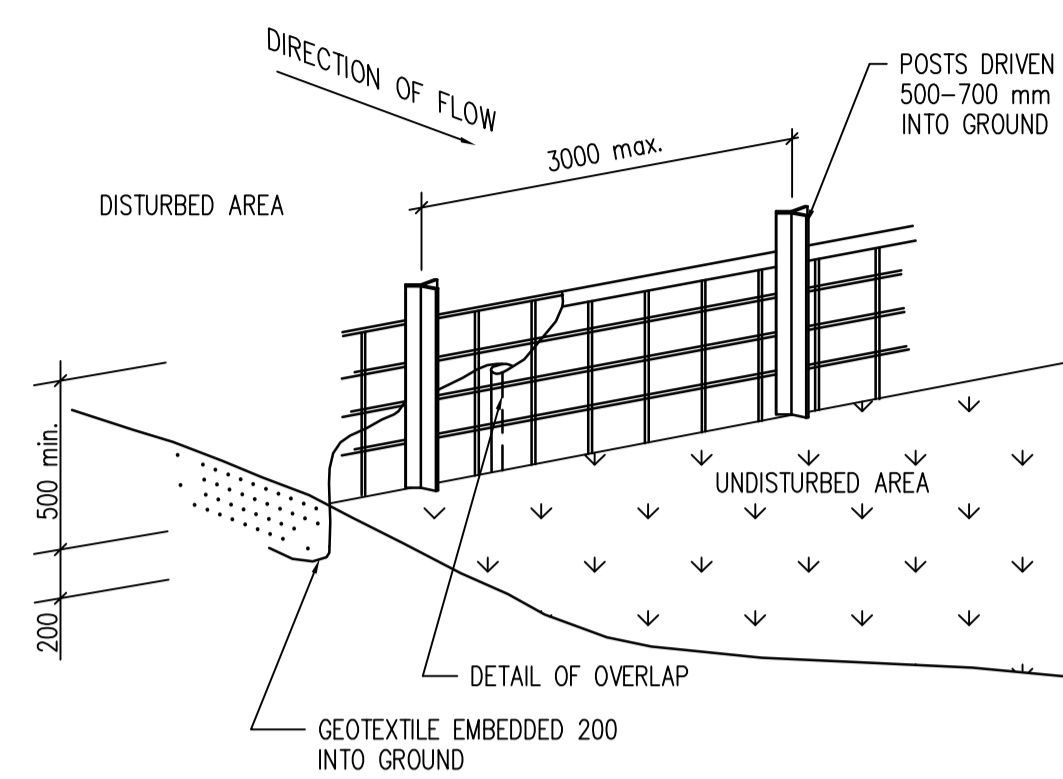
BUSINESS PARTNER:	
PROJECT:	69-79 PEGLAR AVE SOUTH GRANVILLE

TITLE:	EROSION AND SEDIMENT CONTROL PLAN (2)
FILE:	18088-C07a

STATUS:	DA
DATE:	11.03.19
SCALE:	1:100
CONTRACT JOB NO:	18088
PROJECT NO:	BGMZ
STAGE:	DA
DESIGNED BY:	DC
CHECKED BY:	ME
APPROVED BY:	ME
TYPE:	C
SHEET:	C07
REV:	A

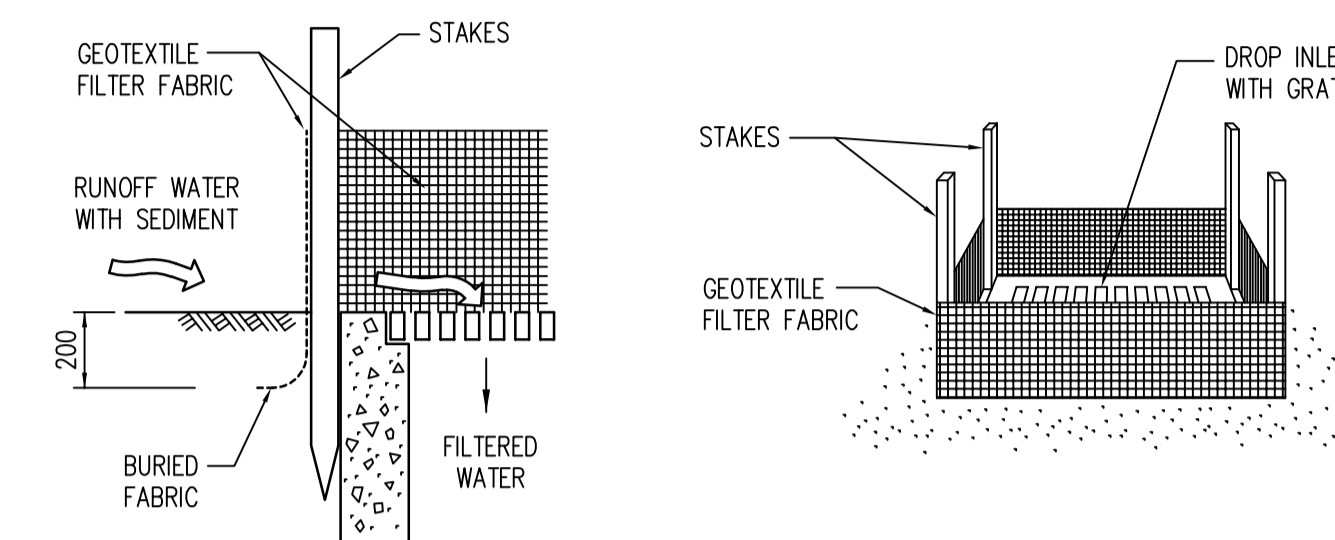


STRAW BALE SEDIMENT FILTER



GEOTEXTILE LINED 'SILT' FENCE

N.T.S.

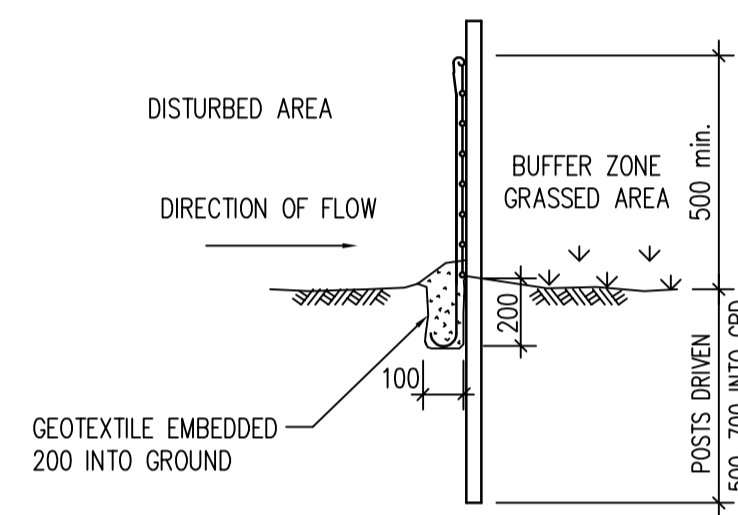


GEOTEXTILE FILTER FABRIC DROP INLET SEDIMENT TRAP

NTS

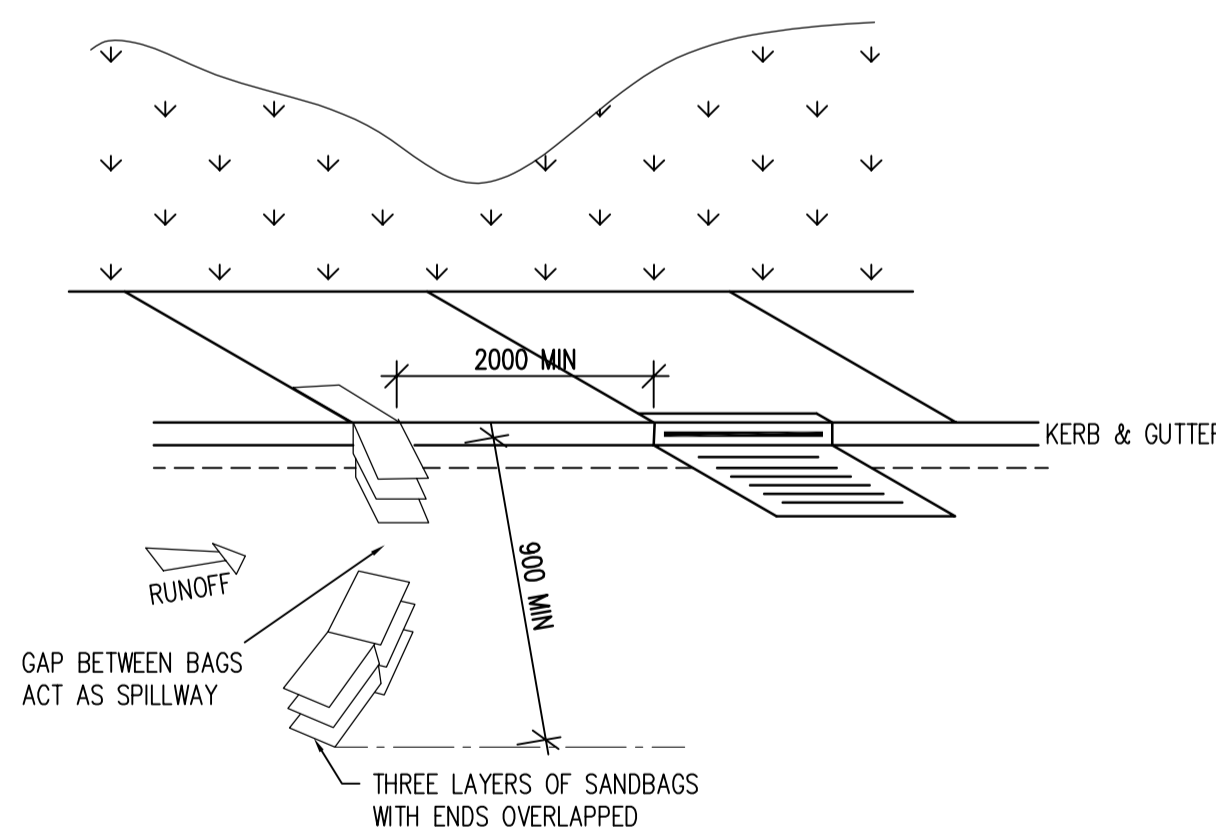
EROSION CONTROL NOTES:

1. ALL EROSION AND SEDIMENT CONTROL MEASURES TO BE INSTALLED PRIOR TO SITE DISTURBANCE
2. STRIPPING OF GRASS AND VEGETATION ETC. FROM SITE SHALL BE KEPT TO A MINIMUM
3. TOPSOIL FROM ALL AREAS THAT WILL BE DISTURBED TO BE STRIPPED AND STOCKPILED ON SITE.
4. ALL SEDIMENT CONTROL STRUCTURES TO BE INSPECTED AFTER EACH RAINFALL EVENT FOR STRUCTURAL DAMAGE AND ALL TRAPPED SEDIMENT TO BE REMOVED TO A NOMINATED SOIL STOCKPILE SITE



GEOTEXTILE LINED 'SILT' FENCE

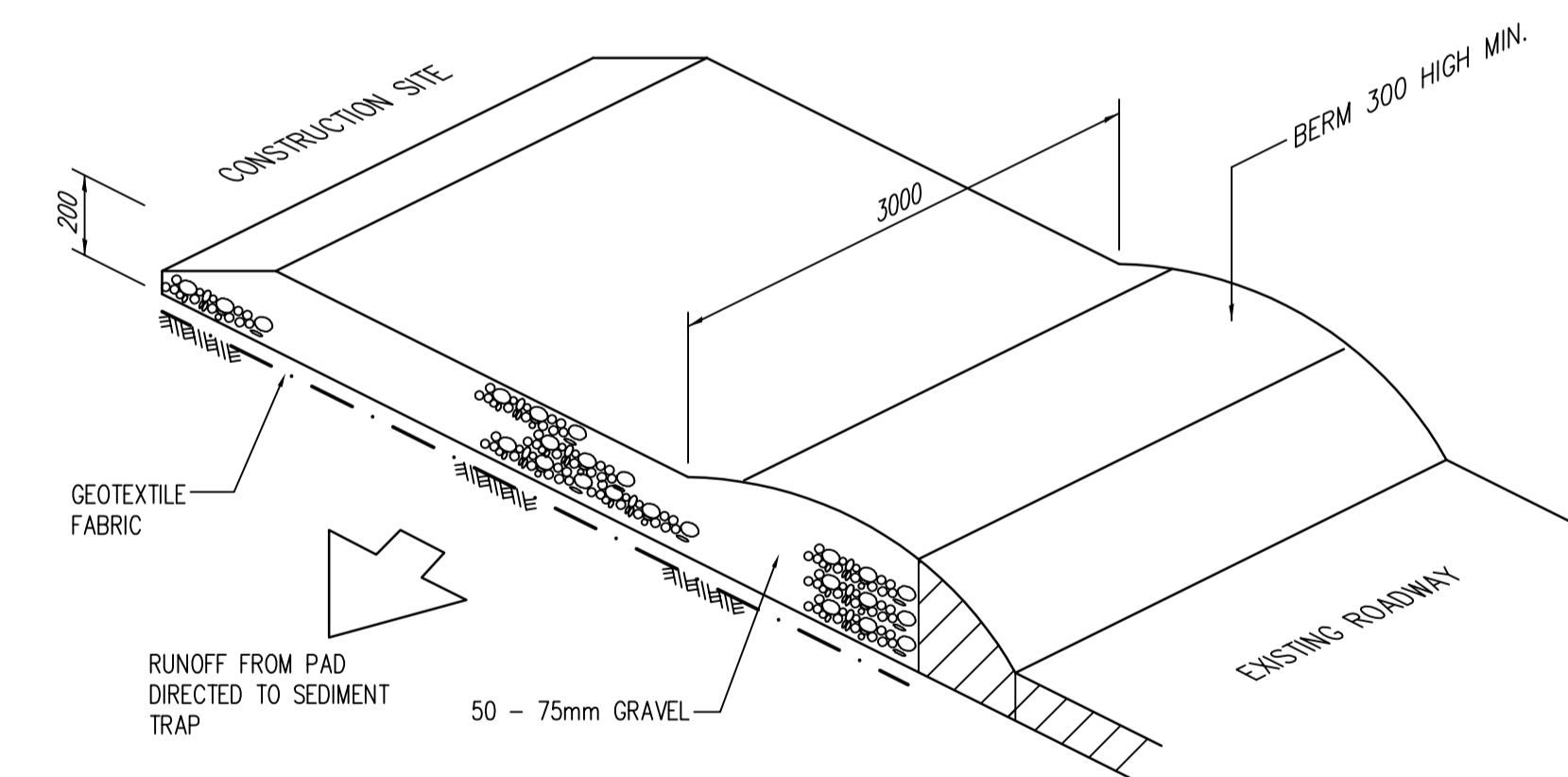
N.T.S.



SANDBAG KERB INLET

SEDIMENT TRAP

N.T.S.



RUBBLE CROSSING

FOR USE AT ALL TRUCK/CONSTRUCTION VEHICLE ENTRY POINTS TO THE SITE

© COPYRIGHT Michael ELL Consulting Engineers Pty. Ltd. The copyright of this drawing remains the property of Michael ELL Consulting Engineers Pty. Ltd. and must not be reproduced in whole or in part without written permission. Do not scale off this drawing. Use figured dimensions. Verify all dimensions on site.



Family & Community Services
Land & Housing Corporation

LOCKED BAG 4009
ASHFIELD NSW BC1800
PHONE No (02) 8753 9000

GROUP GSA
PTY LTD architects

REV	DATE	NOTATION/AMENDMENT

DO NOT SCALE DRAWINGS. CHECK ALL DIMENSIONS ON SITE. FIGURED DIMENSIONS TAKE PRECEDENCE.

ARCHITECT GROUP GSA PTY LTD PH (02) 0261 4144 FAX (02) 8332 3458	CIVIL CONSULTANT MICHAEL ELL CONSULTING ENGINEERS PTY LTD PH (02) 8807 5355 FAX (02) 8807 5366
PROJECT MANAGER LAND & HOUSING CORPORATION PH (02) 8753 8100 FAX (02) 8753 8011	HYDRAULIC CONSULTANT
ELECTRICAL CONSULTANT	LANDSCAPE CONSULTANT

BUSINESS PARTNER:

PROJECT:	69-79 PEGLAR AVE SOUTH GRANVILLE
----------	-------------------------------------

TITLE:	EROSION AND SEDIMENT CONTROL DETAILS
FILE:	18088-C08

STATUS:	DA
DATE:	11.03.19
SCALE:	1:20
CONTRACT JOB NO:	18088
PROJECT NO:	BGMMZ
STAGE:	DA
DESIGNER:	DC
CHECKED:	ME
APPROVED:	ME
TYPE:	C
SHEET:	C08
REV:	-